

# Planning for Climate Change



**State Park and Recreation Commission**

**March 7, 2024**

- Alex Stehl, Deputy Director Strategic Planning & Recreation Services Division
- Todd Lewis, Chief Facilities Management Division
- Angela Lottes, Environmental Program Manager Natural Resources Division



# Climate Change

The State is already experiencing the impacts of climate change...

- Coastal Flooding/Rising Seas
- Increased Wildfire Danger
- Extreme Weather Events

The State is responding...

- California Climate Scoping Plan (2023)
- Natural and Working Lands Climate Smart Strategy (2022)
- Extreme Heat Action Plan (2022)
- Wildfire and Forest Resilience Action Plan (2021)
- The Climate Adaptation Strategy (2021)
- State of California Sea Level Rise Guidance (2018)





## Enhancing the Planning Process

- Consistency with State legislation and guidance
- Assessment of current and potential impacts of climate change
- Ongoing management and tracking of data collection and studies
- Tools to identify future impacts at the Park Unit level
- Development of adaptation strategies



# Enhancing the Planning Process

- Integration will be different depending on planning effort i.e. cornerstone documents, generals, and management plans
- Learning in “real-time” through several department “pilot” planning and recovery efforts
- Allowing for collaborative problem solving as we build a statewide approach
- Convened all functions of the Department to align efforts across divisions and programs
- Engagement with government agencies, community organizations, Tribes and operational and management partners
- Collaborating with other entities, including the National Park Service, to draw in critical lessons from their nation-wide approach to climate change planning



# Emergency/ Disaster Recovery and Adaptation

## Where we were:

- Less frequent events
- No dedicated staff
- Critical needs met

## Where we're at:

- Event frequency and severity increasing,
- More frequent, more intense damages with long term recovery and adaptation needs
- Two part time staff

## Where we'll be:

- In 2023 Facilities and Development Division worked to create a dedicated "FEMA" program
- 5 total full-time staff dedicated to response and recovery
- Mixed staff types will allow for flexibility, responsiveness, and a more complete recovery process with better outcomes



# Response, Recovery, and Adaptation

## Preparation

- Prepare
- Inform
- Equip

## During an Emergency/Disaster

- Open, coordinated communication. Staff in the field to support Districts.
- Support damage assessments for emergency vs. permanent work
- State vs. Federal declarations - public assistance
- Identifying and distributing funding if available from OES or FEMA

## Recovery and Adaptation

- Finish health and safety response
- Work with OES and FEMA for data collection and submission
- Full damage Inventory if Federal declaration is made for all categories. A,B are immediate needs, C-G are permanent work, Z is administrative cost.
- Scoping and Site visits
- Immediate response costs, recovery grant funds, matching funds
- Mitigation opportunities
- Reimbursement for actuals vs. small project flat rates
- Project Obligations, annual extensions if older than 3 years, EHP review, closeout.



# Federal Emergency Management Agency

## Scale of Disaster Impacts to State Parks:

- \$400M+ in eligible damages dating back to 2015
- 9 Open Events
- 1,000 + Damage line items
- 4 open BCP's







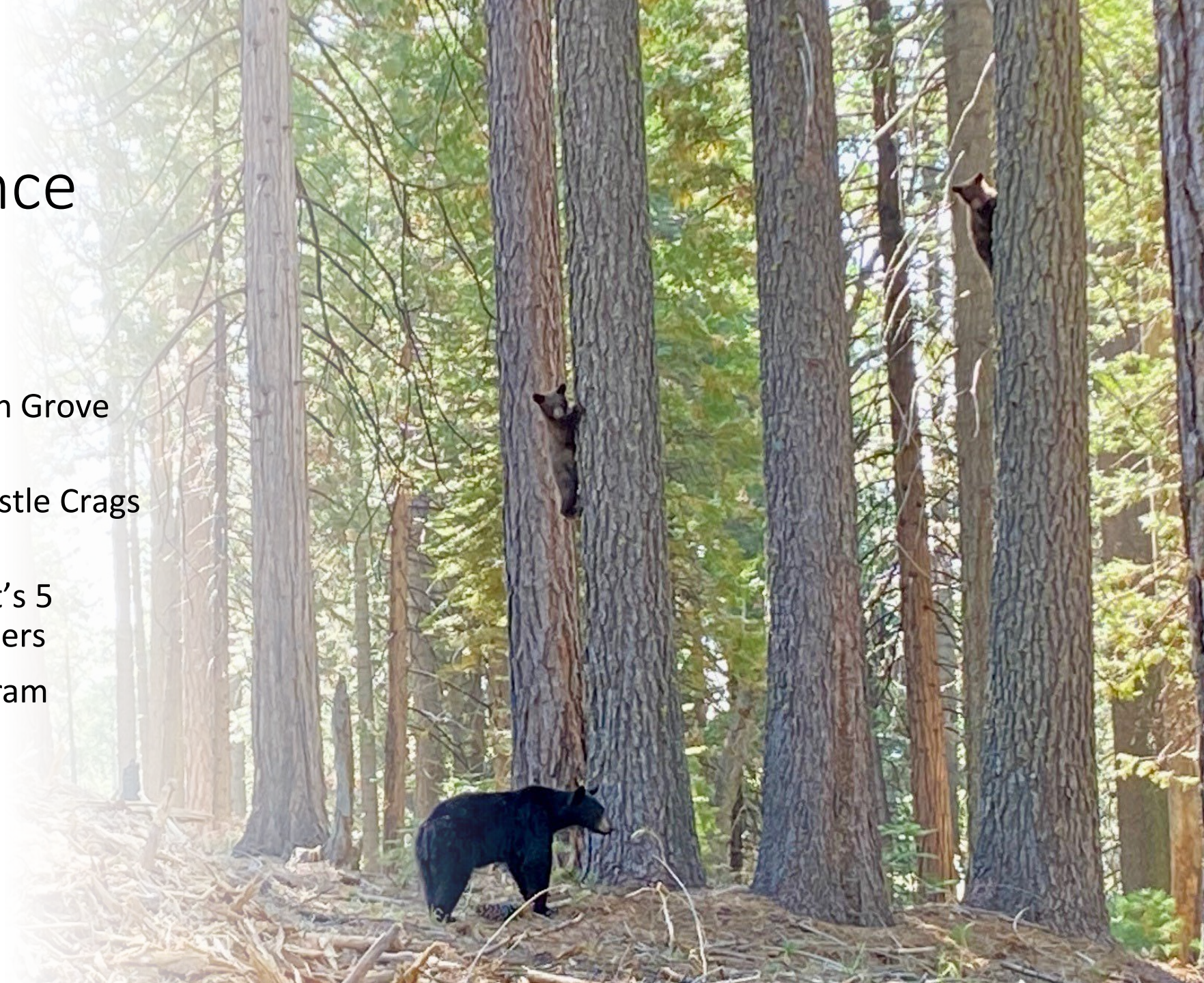
# Wildfire and Forest Resilience Program

- Purpose and objectives
- Program establishment and development
- Partnerships and coordination
- Example projects



# Wildfire and Forest Resilience Program

- Central Valley District: South Grove Natural Preserve
- Northern Buttes District: Castle Crags State Park
- Sonoma-Mendocino District's 5 prescribed burns with partners
- Long-term monitoring program







# Sea Level Rise Adaptation Strategy

- Development and Implementation
- Major funded components
- Projects



# Sea Level Rise Adaptation Strategy

WAVE 1	
# of projects submitted	48
# of projects selected	13
Total cost	~\$3.2 Million
Types of projects	SLR vulnerability assessments (7) Cultural resource inventory (1) Dune restoration (2) SLR Interpretation (1) Historic sea wall (1)

WAVE 2	
# of projects submitted	63
Total cost	~\$21 Million
Types of projects	SLR vulnerability assessments Coastal habitat restoration Cultural resources inventory Exotic species removal Boardwalk & stairway repair SLR Interpretation Coastal Trail Managed retreat Lighthouse studies



WESTERN SNOWY PLOVER



Thank You!



**State Park and Recreation Commission**

**March 7, 2024**

- Alex Stehl, Deputy Director Strategic Planning & Recreation Services Division
- Todd Lewis, Chief Facilities Management Division
- Angela Lottes, Environmental Program Manager Natural Resources Division